



***Newly constructed 200 ft. Self-Supporting tower.***

## **New Life for 91.9 FM, Radio Port Townsend**

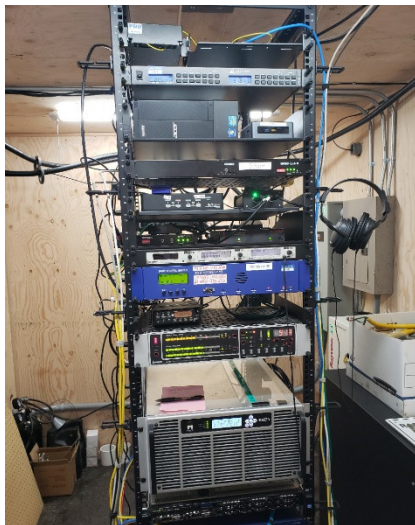
KPTZ is listener supported community Radio. Fueled largely by volunteers, KPTZ engages, informs and entertains listeners in the greater Port Townsend and Olympic Peninsula area. The past twelve months has seen the completion of an all-new digital broadcast studio at Fort Worden, and a newly commissioned broadcast transmitter site on Rainshadow Drive. Both the new studio and the new transmitter site were built largely by volunteers who spent many hundreds of hours on the projects.



***Completed Rainshadow Drive Transmitter Site***



***Tower Under Construction***



***Transmitter Equipment Rack***



***Coaxial feed line***



***Transmitter building being delivered***



***KPTZ Rainshadow Transmitter Site Project:  
Powered by Volunteers***



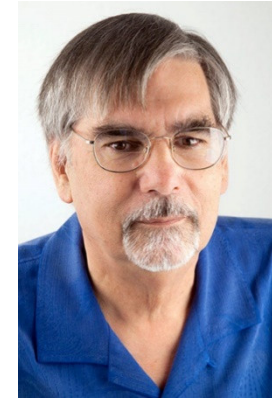
***Mike Carroll***



***John Miller***



***Fred Flanzer***



***Bill Putney***